

PIANO

501

COME IN FROM THE RAIN

SLOWLY

(VOCAL)

Arr. by Walt Stuart

Musical notation for the piano introduction, consisting of two staves. The upper staff is in treble clef and the lower staff is in bass clef. The key signature has one flat (B-flat). The tempo is marked 'SLOWLY'. The notation includes chords and melodic lines. Handwritten annotations include 'FΔ7' above the first measure, 'Eb9' above the second measure, and 'FA7' above the third measure. There are also some scribbles and a double bar line in the fourth measure.

A

RHYTHM ONLY BEHIND PIANO SOLO

Musical notation for rhythm accompaniment section A. It consists of two staves. The upper staff is filled with diagonal lines, indicating a piano solo. The lower staff shows a rhythmic pattern of quarter notes. Chords are written above the staff: Fadd9 F, Am7/D, Dm/A, Fadd9 F, Am7/D, Dm.

Musical notation for rhythm accompaniment section B. It consists of two staves. The upper staff is filled with diagonal lines, indicating a piano solo. The lower staff shows a rhythmic pattern of quarter notes. Chords are written above the staff: Bbmaj7, Eb9, F, Bb/C.

B

Musical notation for rhythm accompaniment section C. It consists of two staves. The upper staff is filled with diagonal lines, indicating a piano solo. The lower staff shows a rhythmic pattern of quarter notes. Chords are written above the staff: Fadd9 F, Am7/D, Dm/A, F, Am7/D, Dm.

Musical staff system 1:

- Chords: $B^b MAJ^7$, $E^b 9$, F , B^b / C
- Notes: $\text{B}^b, \text{D}, \text{E}^b, \text{F}$

C

Musical staff system 2:

- Chords: Cm^7 , F^7 , F^7 , $B^b MAJ^7$, $E^b 9$
- Notes: $\text{C}, \text{D}, \text{E}, \text{F}, \text{G}, \text{A}, \text{B}^b$

Musical staff system 3:

- Chords: $B^b MAJ^7$, $E^b 9$, Am^7 , Am^7 / D , D^7
- Notes: $\text{B}^b, \text{D}, \text{E}^b, \text{F}, \text{G}, \text{A}, \text{B}^b$

SOLO PULL

D

END SOLO

Musical staff system 4:

- Chords: Gm^7 , B^b / C , F , F , Am^7 / D , Dm / A
- Notes: $\text{G}, \text{A}, \text{B}^b, \text{C}, \text{D}, \text{E}, \text{F}, \text{G}$

Musical staff system 5:

- Chords: F , Am^7 / D , Dm , $B^b MAJ^7$, $E^b 9$
- Notes: $\text{F}, \text{G}, \text{A}, \text{B}^b, \text{C}, \text{D}, \text{E}^b, \text{F}$

50-3

COME IN


O.S. To (F)

-3-

Handwritten musical notation for the first system. The top staff is a treble clef with a key signature of one flat (Bb) and a time signature of 8. The bottom staff is a bass clef. The first measure contains a whole note chord F. The second measure contains a whole note chord Bb/C with the handwritten instruction "THEN STRIKE OUT" written above it. The third measure contains a triplet of eighth notes: F, Fm7, Gm7. The fourth measure contains a whole note chord Eb9.

Handwritten musical notation for the second system. The top staff is a treble clef with a key signature of one flat (Bb) and a time signature of 8. The bottom staff is a bass clef. The first measure contains a triplet of eighth notes: F, Fm7, Gm7. The second measure contains a whole note chord Eb9. The third measure contains a whole note chord FΔ7. The fourth measure contains a whole note chord Eb9.

Handwritten musical notation for the third system. The top staff is a treble clef with a key signature of one flat (Bb) and a time signature of 8. The bottom staff is a bass clef. The first measure contains a whole note chord F. The second measure contains a whole note chord F with the handwritten instruction "Last chord" written above it. The third and fourth measures contain a wavy line indicating a sustained sound or a specific performance technique.

RIT. 

Four empty musical staves at the bottom of the page, arranged in two pairs of two staves each.

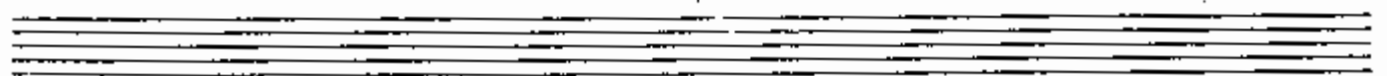
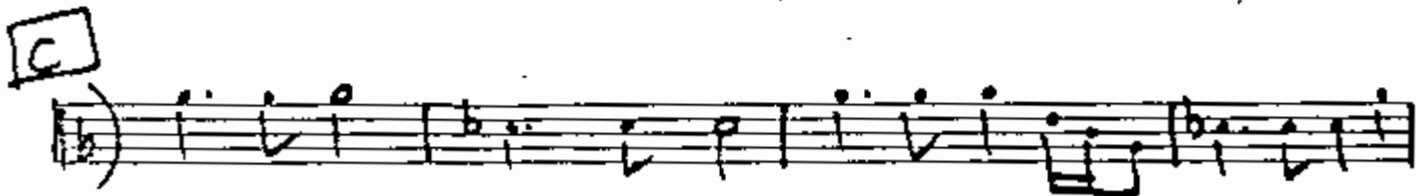
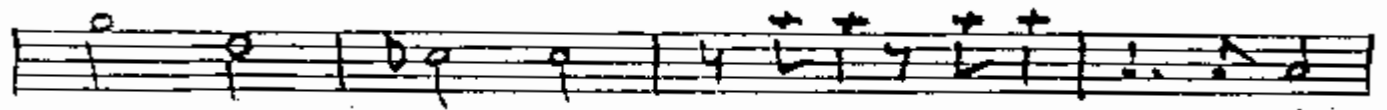
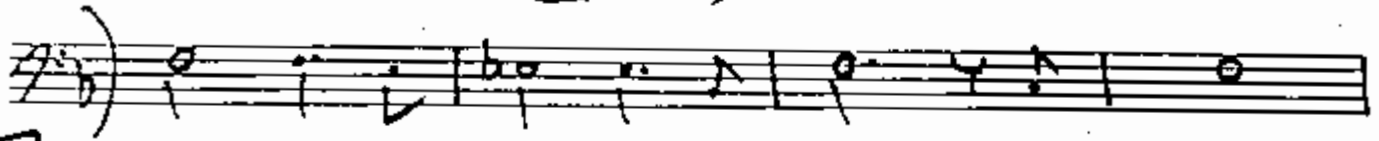
BASS

COME IN FROM THE RAIN

SLOWLY

(VOCAL)

Arr. by Walt Stuart

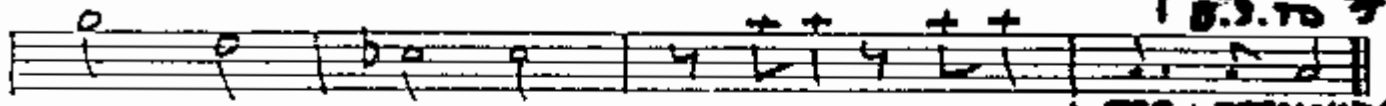
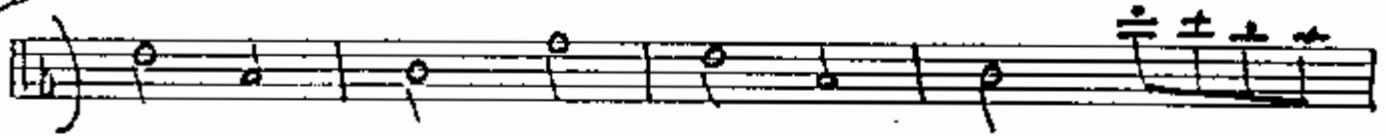


SASS

- 2 -

COME IN

D

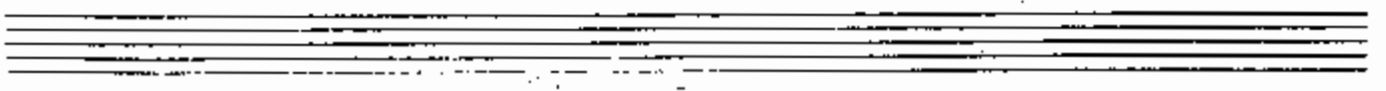
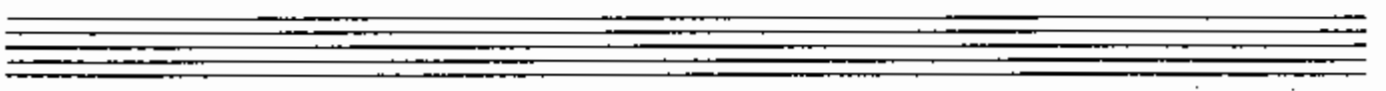
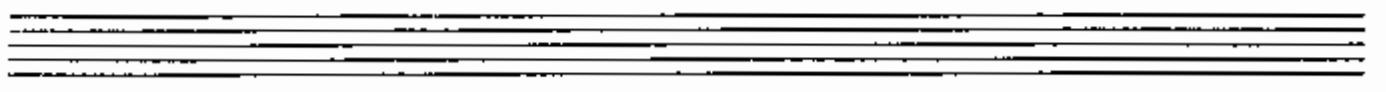
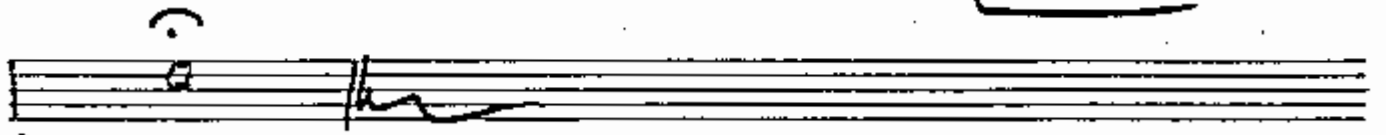


B.B. TO 3.

THEN STRAIGHT OUT



RIT. ~~~~~



GUITAR

COME IN FROM THE RAIN

SLOWLY

(VOCAL)

Arr. by Walt Stuart

Musical notation for the first system, including a vocal line and guitar accompaniment. Chords are labeled: $F\Delta 7$, $E_b 9$, and $F\Delta 7$. The guitar part features a steady eighth-note rhythm.

A RHYTHM ONLY BEHIND PIANO SOLO

Musical notation for section A, showing guitar chords and a rhythmic pattern. Chords are labeled: $F\text{add} 9$, F , $\frac{A_m 7}{D}$, $\frac{D_m}{A}$, $F\text{add} 9$, F , $\frac{A_m 7}{D}$, and D_m .

Musical notation for section A, showing guitar chords and a rhythmic pattern. Chords are labeled: $B^b m A 7$, $E_b 9$, F , and $\frac{B^b}{C}$.

B

Musical notation for section B, showing guitar chords and a rhythmic pattern. Chords are labeled: $F\text{add} 9$, F , $\frac{A_m 7}{D}$, $\frac{D_m}{A}$, F , $\frac{A_m 7}{D}$, and D_m .

Musical staff system 1. Chords: $B^b MAJ^7$, $E^b 9$, F , B^b / C . Includes a circled '9' and a boxed 'C'.

Musical staff system 2. Chords: Cm^7 , F^9 , F^7 , $B^b MAJ^7$, $E^b 9$. Includes a circled '9' and a boxed 'C'.

Musical staff system 3. Chords: $B^b MAJ^7$, $E^b 9$, Am^7 , Am^7 / D , D^7 . Includes a circled '9' and a boxed 'D'.

Musical staff system 4. Chords: Gm^7 , B^b / C , F , F , Am^7 / D , Dm / A . Includes a circled '9' and a boxed 'D'.

Musical staff system 5. Chords: F , Am^7 / D , Dm , $B^b MAJ^7$, $E^b 9$. Includes a circled '9' and a boxed 'D'.

COME IN


- 3 -

D.S. TO (5)

Handwritten musical notation for the first system. The top staff is a treble clef with a key signature of one flat (Bb) and a time signature of 8. The bottom staff is a bass clef. The first measure contains a whole note chord F. The second measure contains a whole note chord Bb/C with the handwritten note "THEN STRIKE OUT". The third measure contains a whole note chord F with a triplet of eighth notes (Fm7, Gm7, Fm7) written above it. The fourth measure contains a whole note chord Eb9. The bass staff shows the corresponding bass line with notes and accidentals.

Handwritten musical notation for the second system. The top staff is a treble clef with a key signature of one flat (Bb) and a time signature of 8. The bottom staff is a bass clef. The first measure contains a whole note chord F with a triplet of eighth notes (Fm7, Gm7, Fm7) written above it. The second measure contains a whole note chord Eb9. The third measure contains a whole note chord FΔ7. The fourth measure contains a whole note chord Eb9. The bass staff shows the corresponding bass line with notes and accidentals.

Handwritten musical notation for the third system. The top staff is a treble clef with a key signature of one flat (Bb) and a time signature of 8. The bottom staff is a bass clef. The first measure contains a whole note chord F. The second measure contains a whole note chord F with the handwritten note "LAST CHORD" written above it. The third and fourth measures are empty, with a wavy line drawn across the staves. The bass staff shows the corresponding bass line with notes and accidentals.

RIT. 

Four empty musical staves, two on the top line and two on the bottom line, intended for additional notation.

DRUMS

COME IN FROM THE RAIN

SLOWLY Rock

(VOCAL)

Arr. by Walt Stuart

Handwritten drum notation for the song "Come In From The Rain". The notation is written on five staves. The first staff is marked with a circled 'A' and 'mp'. The second staff is marked with 'mp'. The third staff is marked with a circled 'B'. The fourth staff is marked with a circled 'C'. The notation includes various rhythmic patterns, including eighth and sixteenth notes, rests, and dynamic markings. There are also some handwritten annotations, such as a circled 'S' and a large 'V' shape.

DRUMS

COME IN

D

D.S. TO F.

THEN STRAIGHT OUT

RIT.

MP

(f. o. o.)

GUITAR

COME IN FROM THE RAIN

SLOWLY

(VOCAL)

Arr. by Walt Stuart

Handwritten musical notation for the first system. The top staff is a vocal line with notes and rests. The bottom staff is a guitar accompaniment line with chords: $F\Delta 7$, $E b 9$, and $F A 7$. There are also some handwritten markings like '9 + b +' and a large 'V' at the end of the line.

A

RHYTHM ONLY BEHIND PIANO SOLO

Handwritten musical notation for section A, showing a rhythm line with chords: $Fadd 9$, F , $A m 7 / D$, $D m / A$, $Fadd 9$, F , $A m 7 / D$, $D m$. The notation includes a treble clef, a key signature of one flat, and a 4/4 time signature.

Handwritten musical notation for section A, showing a bass line with chords: $B b m 7$, $E b 9$, F , and $B b / C$. The notation includes a bass clef, a key signature of one flat, and a 4/4 time signature.

B

Handwritten musical notation for section B, showing a rhythm line with chords: $Fadd 9$, F , $A m 7 / D$, $D m / A$, F , $A m 7 / D$, $D m$. The notation includes a treble clef, a key signature of one flat, and a 4/4 time signature.

Musical notation system 1: Chords: B^bMAJ⁷, E^b9, F, B^b/C. Includes a circled '9' and a boxed 'C'.

Musical notation system 2: Chords: C^m, F⁹, F⁷, B^bMAJ⁷, E^b9. Includes a circled '9'.

Musical notation system 3: Chords: B^bMAJ⁷, E^b9, A^m⁷, A^m⁷/D, D⁷. Includes a circled '9'.

SOLO FULL D END SOLO

Musical notation system 4: Chords: G^m, B^b/C, F, F^{ALL}, F, A^m⁷/D, D^m/A. Includes a circled '9'.

Musical notation system 5: Chords: F, A^m⁷/D, D^m, B^bMAJ⁷, E^b9. Includes a circled '9'.

COME IN

- 3 -

D.S. TO (F)

Handwritten musical notation for the first system. The top staff is a treble clef with a key signature of one flat (Bb) and a time signature of 8. The bottom staff is a bass clef. The first measure contains a whole note chord 'F'. The second measure contains a whole note chord 'Bb/C' with the handwritten instruction 'THEN STRIKE OUT' written above it. The third measure contains a whole note chord 'F' with a triplet of eighth notes 'FMAJ7 GM7 FMAJ7' written above it. The fourth measure contains a whole note chord 'Eb9'. The bottom staff contains the corresponding bass line with notes and stems.

Handwritten musical notation for the second system. The top staff is a treble clef with a key signature of one flat (Bb) and a time signature of 8. The bottom staff is a bass clef. The first measure contains a whole note chord 'F' with a triplet of eighth notes 'FMAJ7 GM7 FMAJ7' written above it. The second measure contains a whole note chord 'Eb9'. The third measure contains a whole note chord 'FA7'. The fourth measure contains a whole note chord 'Eb9'. The bottom staff contains the corresponding bass line with notes and stems.

Handwritten musical notation for the third system. The top staff is a treble clef with a key signature of one flat (Bb) and a time signature of 8. The bottom staff is a bass clef. The first measure contains a whole note chord 'F'. The second measure contains a whole note chord 'F' with the handwritten instruction 'COND LAST Chord' written above it. The rest of the system is filled with a large, wavy scribble. Below the first measure, the word 'RIT.' is written with a wavy line underneath it.

Four empty musical staves, each consisting of a treble clef staff and a bass clef staff, arranged in two pairs.

FLUTE I

COME IN FROM THE RAIN

SLOWLY

(VOCAL)

Arr. by Walt Stuart

Musical staff with treble clef and key signature of one flat. It contains a melodic line with a long slur over the first six measures and a fermata at the end.

A

Musical staff with bass clef and key signature of one flat. It contains a bass line with a fermata in the middle and a "4" written above it.

Musical staff with treble clef and key signature of one flat. It contains a melodic line with slurs and sixteenth-note patterns.

B

Musical staff with bass clef and key signature of one flat. It contains a bass line with slurs and a "mf" dynamic marking.

Musical staff with treble clef and key signature of one flat. It contains a melodic line with slurs.

Musical staff with treble clef and key signature of one flat. It contains a melodic line with a circled "5" above the first measure and a long slur.

C

Musical staff with bass clef and key signature of one flat. It contains a bass line with slurs and a "mf" dynamic marking.

Musical staff with treble clef and key signature of one flat. It contains a melodic line with slurs and a "mf" dynamic marking.

FLUTE 2

~~COME IN FROM THE RAIN~~

SLOWLY

(VOCAL)

Arr. by Walt Stuart

Section A: First system of music. Treble clef, key signature of one flat (Bb), 4/4 time signature. The melody begins with a whole rest, followed by a series of eighth notes. A box labeled 'A' is placed to the left of the first measure. A '4' is written below the staff.

Section B: Second system of music. Treble clef, key signature of one flat, 4/4 time signature. The melody continues with eighth notes and includes some grace notes. A box labeled 'B' is placed to the left of the first measure. The dynamic marking 'mp' is written below the first measure.

Section C: Third system of music. Treble clef, key signature of one flat, 4/4 time signature. The melody continues with eighth notes and includes some grace notes. A circled 'S.' is written above the first measure.

Section C: Fourth system of music. Treble clef, key signature of one flat, 4/4 time signature. The melody continues with eighth notes and includes some grace notes. A box labeled 'C' is placed to the left of the first measure. The dynamic marking 'mf' is written below the first measure.

Section C: Fifth system of music. Treble clef, key signature of one flat, 4/4 time signature. The melody continues with eighth notes and includes some grace notes. The dynamic marking 'mp' is written below the first measure.

FLUTE 2

- 2 -

COME IN

D

mp

D.S. TO F.

THEN STRAIGHT OUT

b+

RIT.

mp

~~SAZ~~

TENOR SAX

COME IN FROM THE RAIN

SLOWLY

(VOCAL)

Arr. by Walt Stuart

A

4

B

mp

F#

C

mp

CLAR. 3

- 2 -

COME IN

D
mp

D.S. TO THE
THEN STRIKE OUT

p

RIT.

mp

TRUMPET I

SLOWLY

COME IN FROM THE RAIN

(VOCAL)

N.V.

Arr. by Walt Stuart

A *mp*

7 *mp*

B

2 *mp*

3 *mp*

C *mp*

3 *mp*

D *mp*

2 *mp*

3 *p.s. to f.*

THEY STRAIGHT OUT

TRPT. I

- 2 -

COME IN

RIT. ~ MP

TRUMPET 2

COME IN FROM THE RAIN

SLOWLY (VOCAL)

N.V. Arr. by Walt Stuart

A

mp mp.

7

B

mp

2

C

mp

F#

3

D

mp mp

2

D.S. TO F.
THEN STRAIGHT OUT

TRPT. 2

- 2 -

COME IN

Handwritten musical notation for the first staff. It begins with a treble clef and a key signature of one sharp (F#). The notation consists of a sequence of notes: a quarter rest, followed by a quarter note with a slur and an accent (>), a quarter note with a slur and an accent (>), a quarter note with a slur and an accent (>), a quarter note with a slur and an accent (>), and a quarter note with a slur and an accent (>). There are also some handwritten markings below the staff, including a large '3' and a wavy line.

Handwritten musical notation for the second staff. It starts with a whole rest, followed by a half note, a whole rest, and another half note. Below the staff, there are dynamic markings: 'MP' under the first half note, 'RIT.' under the first whole rest, and 'MP' under the second half note. A wavy line is drawn under the 'RIT.' marking.

Empty musical staff.

Empty musical staff.

Empty musical staff.

Empty musical staff.

TROMBONE I

COME IN FROM THE RAIN

SLOWLY (VOCAL)

N.V. Arr. by Walt Stuart

Handwritten musical notation for the first system. It features a treble clef with a key signature of one flat (B-flat) and a 4/4 time signature. The melody consists of quarter notes and half notes. A dynamic marking of *mp* is present. A slur covers the first two measures, and another slur covers the last two measures. A circled '8' is written above the staff.

Handwritten musical notation for the second system, starting with a boxed letter 'A'. It features a bass clef with a key signature of one flat. The notation includes a dynamic marking of *mp* and a slur over the first two measures.

Handwritten musical notation for the third system, starting with a boxed letter 'B'. It features a bass clef with a key signature of one flat. The notation includes a dynamic marking of *mp* and a slur over the first two measures.

Handwritten musical notation for the fourth system, consisting of a single staff with a dynamic marking of *mp* and a slur over the first two measures.

Handwritten musical notation for the fifth system, featuring a treble clef with a key signature of one flat. The notation includes a dynamic marking of *mp* and a slur over the first two measures.

Handwritten musical notation for the sixth system, starting with a boxed letter 'C'. It features a bass clef with a key signature of one flat. The notation includes a dynamic marking of *mp* and a slur over the first two measures.

Handwritten musical notation for the seventh system, consisting of a single staff with a dynamic marking of *mp* and a slur over the first two measures.

Handwritten musical notation for the eighth system, consisting of a single staff with a dynamic marking of *mp* and a slur over the first two measures.

BONE I

- 2 -

COME IN

D

mp

b e

D.S. TO 4.

THE STRAND OUT

3

b e

3

b e

mp

RIT.

mp

F VOCAL

4 meas intro

COME IN FROM THE RAIN

WELL HELLO THERE
GOOD OLD FRIEND OF MINE
YOU'VE BEEN REACHING FOR YOUR SELF
FOR SUCH A ^{Long} LONG TIME. THERE'S SO
MUCH TO SAY. NO NEED TO EXPLAIN,
JUST AN OPEN DOOR FOR YOU TO COME
IN FROM THE RAIN.

THERE'S A LONG ROAD, WHEN YOU'RE
ON YOUR OWN, AND ~~I COME TO MEET YOU~~ ^{A man like you will}
~~YOU~~ ALWAYS CHOOSE THE LONG WAY
HOME—THERE'S NO RIGHT OR WRONG,
I'M NOT HERE TO BLAME, I JUST WANT
TO BE THE ONE TO KEEP YOU FROM THE
RAIN, FROM THE RAIN

AND IT ~~IS~~ LOOKS LIKE, SUNNY SKIES,
NOW THAT I KNOW ⁷ YOU'RE ALRIGHT
TIME HAS LEFT US OLDER
AND WISER, I KNOW I AM

—AND IT'S GOOD TO KNOW
MY BEST FRIEND HAS COME HOME AGAIN,
CAUSE I THINK OF US, LIKE AND OLD
CLICHE; BUT IT DOESN'T MATTER

CAUSE I LOVE YOU ANY WAY

8 BARS ^{Remains} COME IN FROM THE RAIN

COME IN FROM THE RAIN

^{sofly} COME IN FROM THE RAIN